

## What are Year Round Events

A Year Round Event (YRE) or Seasonal Event is a special form of Walk which permits enjoyment of a walk, and accumulation of IVV distance credits, on days when other events may not be available.

### How It Works

Since YRE's are available all year (Jan—Dec) they are run slightly differently from a normal walk. The start point for the walk, is usually at a convenience store, gas station or restaurant. These establishments have kindly allowed us to hold the a "Walk Box" for the walk. Signing up for a YRE:

- A. Arrive at the Start Point. Ask the person at the counter for the Walk Box. Move to a location in the store where you are not hindering other customers and open the box
- B. Take out the registration binder. ALL WALKERS MUST REGISTER & SIGN the book.
- C. If collecting the IVV Awards, find an empty envelope and place the \$2.00 in it. Make sure you put the # (from the registration book) on it as well as the date done. Seal and place it in the Used Envelopes folder.
- D. Stamp your books and return the stamp.
- E. Get a map & directions. Close the box and return it. Thank the staff, and then exit and enjoy the walk.

YRE#	Location	Start Point
003	Kanata	Kanata Leisure Centre
030	Woodroffe South	Nepean Sportsplex, Fitness Centre
090	Richmond	Mac's Milk, 6138 Perth St
092	Crystal Beach	PetroCan, 3095 Carling Ave
100	Greenbank	Mac's, 299 Greenbank Rd
130	College Square	New Balance Store, College Square
147	South Keys	Mac's Milk, Greenboro Plaza, 25 Tapiola
148	Stittsville Village	Shopper Drug Mart, 1300 Main St
272	Westboro	Bridgehead Coffee Shop, 362 Richmond Road
<b>Seasonal</b>		<b>01 Jun—30 Sept</b>
123	Kanata—East	PharmaPlus, Hazeldean Mall
193	Aylmer	Dinty's Restaurant, 620 Aylmer Rd
290	Barrhaven	Sobey's, Greenbank Ave
<b>Ont Directors</b>		
054	Manotick	Mac's Milk, Main St



NEPEAN NOMADS WALKING CLUB

Fun, Fitness and Friendship



## 2012 Year Round Events and Seasonal Events

Phone: +1 613 825 7180  
 NCR Walk Info: +1 613 784 8086  
 E-mail: [nepeannomads@bell.net](mailto:nepeannomads@bell.net)  
 Web Site: [www.nepeannomads.com](http://www.nepeannomads.com)

# Map Of Year Round and Season and Events

**193** — Aylmer — Dinty's Restaurant, 6200 Aylmer Rd, Que

**272** — Westboro — Bridgehead Coffee—362 Richmond Rd

**092** — Crystal Beach — PetroCan — 3095 Carling Ave

**003** — Kanata — Kanata Leisure Centre, 70 Aird Pl

**123** — Kanata East — PharmaPlus, Hazeldean Mall, Hazeldean Rd

**148** — Stittsville Village — Shoppers Drug Mart, 1300 Main St, Stittsville

**147** — South Keys — Mac's Milk—Greenboro Plaza, 25 Tapiola Dr

**130** — College Square — New Balance Store, College Square, Woodroffe

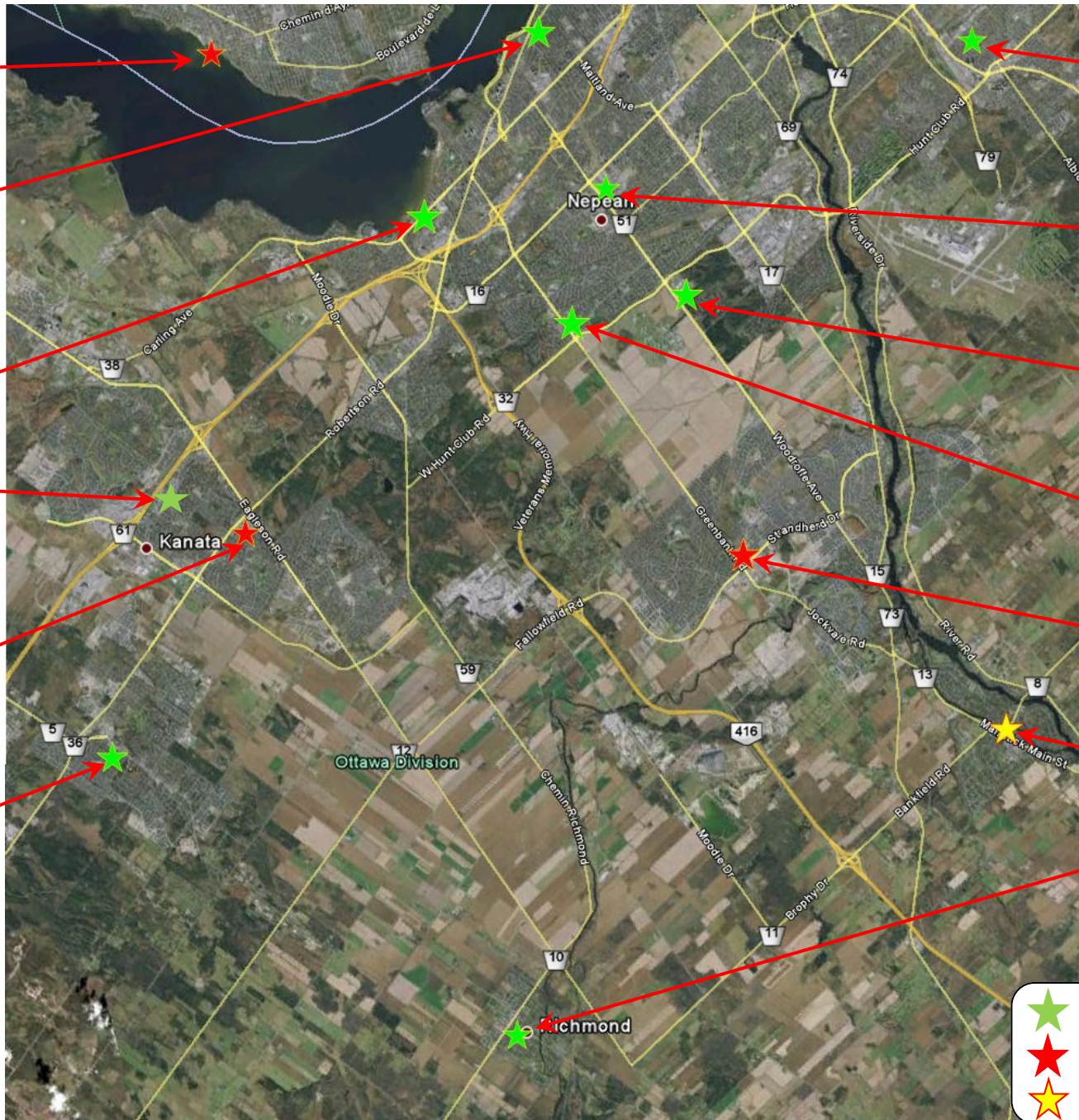
**030** — Woodroffe South — Nepean Sportsplex, Fitness Centre

**100** — Greenbank — Mac's Milk, 229 Greenbank Rd

**290** — Barrhaven — So-beys, Greenbank Rd

**054** — Manotick — Mac's Milk, Main St, Manotick

**090** — Richmond — Mac's Milk, 6138 Perth St



- ★ YRE
- ★ YRE—Seasonal
- ★ YRE—Ontario Directors Walk

